

Parks, Recreation and Cultural Services Advisory Board

Golf Presentation

Patty Jewett & Valley Hi
2022 Year End Review

Patrick Gentile CGCS
Golf Division Superintendent



April 13, 2023



2022 Rounds Data



Patty Jewett

	<u>2022</u>	<u>2021</u>	<u>2020</u>
9-Hole Rounds	98,603	107,962	98,491

Valley Hi

	<u>2022</u>	<u>2021</u>	<u>2020</u>
9-Hole Rounds	52,327	53,608	55,455

Days Closed



	2022	2021	2020	2019	2018	2017
Patty Jewett	84	74	86*	99	70	53
Valley Hi	78	65	82*	100	68	56

*Closed 10 days due to Stay-at-Home Orders
Closed day = less than \$250.00 golf revenue

2022 Financials



Patty Jewett

	Budgeted	Actual	Difference
Revenue	\$2,968,354.00	\$2,958,451.00	\$9,903.00
Expenses	*\$3,520,073.00	\$3,420,167.00	\$99,906.00
Difference		\$106,073.00	

*((\$567,789.00 Carried over from 2021 for the parking lot project)

Estimated Fund Contribution \$106,073.00

Valley Hi

	Budgeted	Actual	Difference
Revenue	\$1,280,680.00	\$1,297,185.00	\$ 16,505.00
Expenses	\$1,268,399.00	\$1,304,774.00	\$ 36,375.00
Difference		\$ 7,589.00	

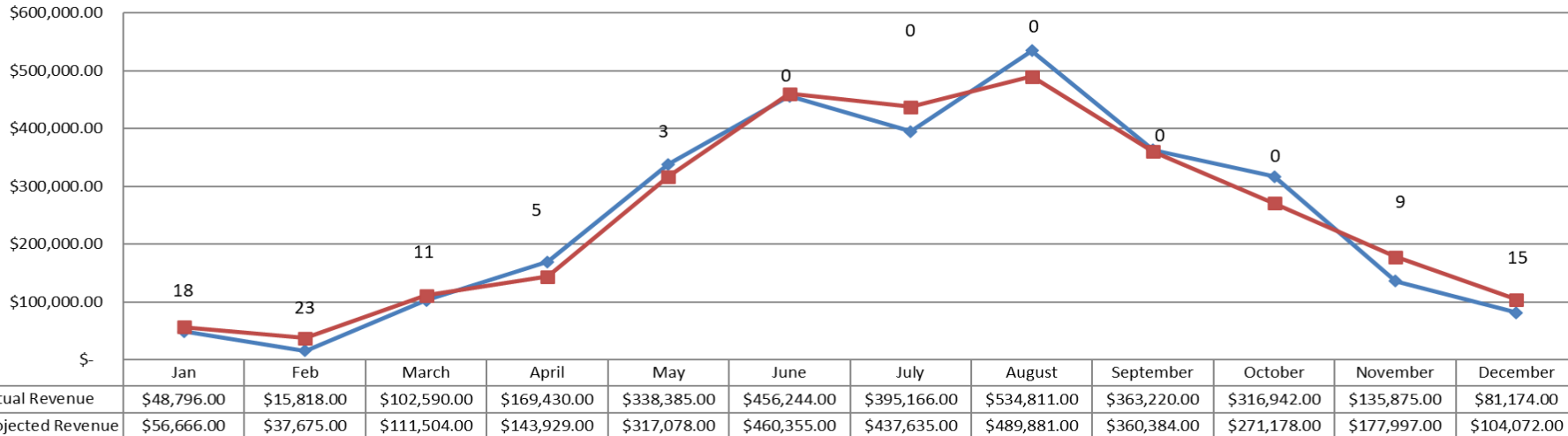
Estimated Fund Draw \$7,589.00

2022 Golf Revenue by Month

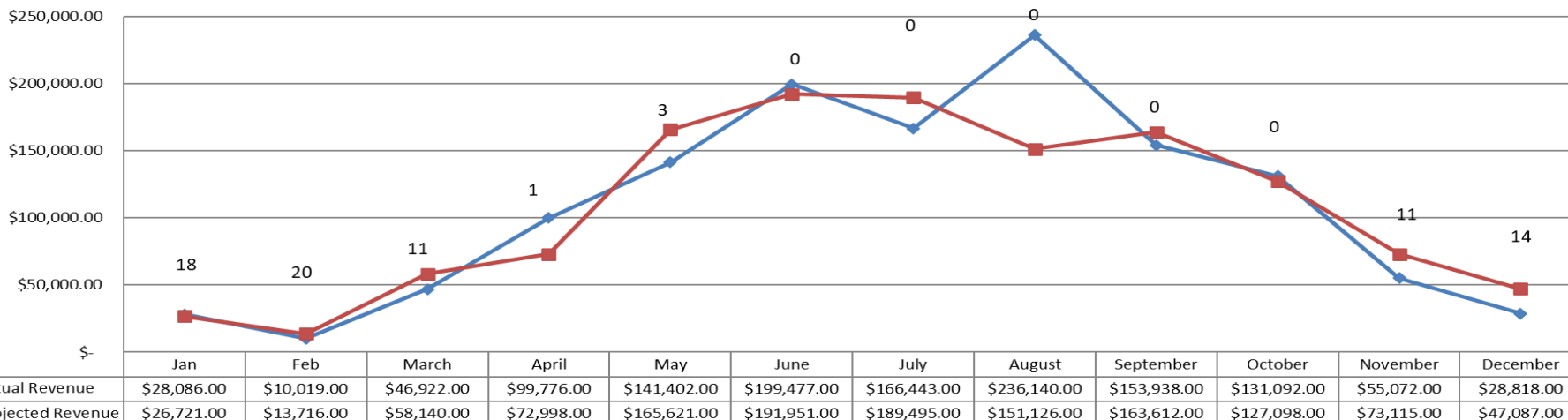


Days Closed

Patty Jewett



Valley Hi



2023 Budget



Patty Jewett

Revenue \$3,209,238.00

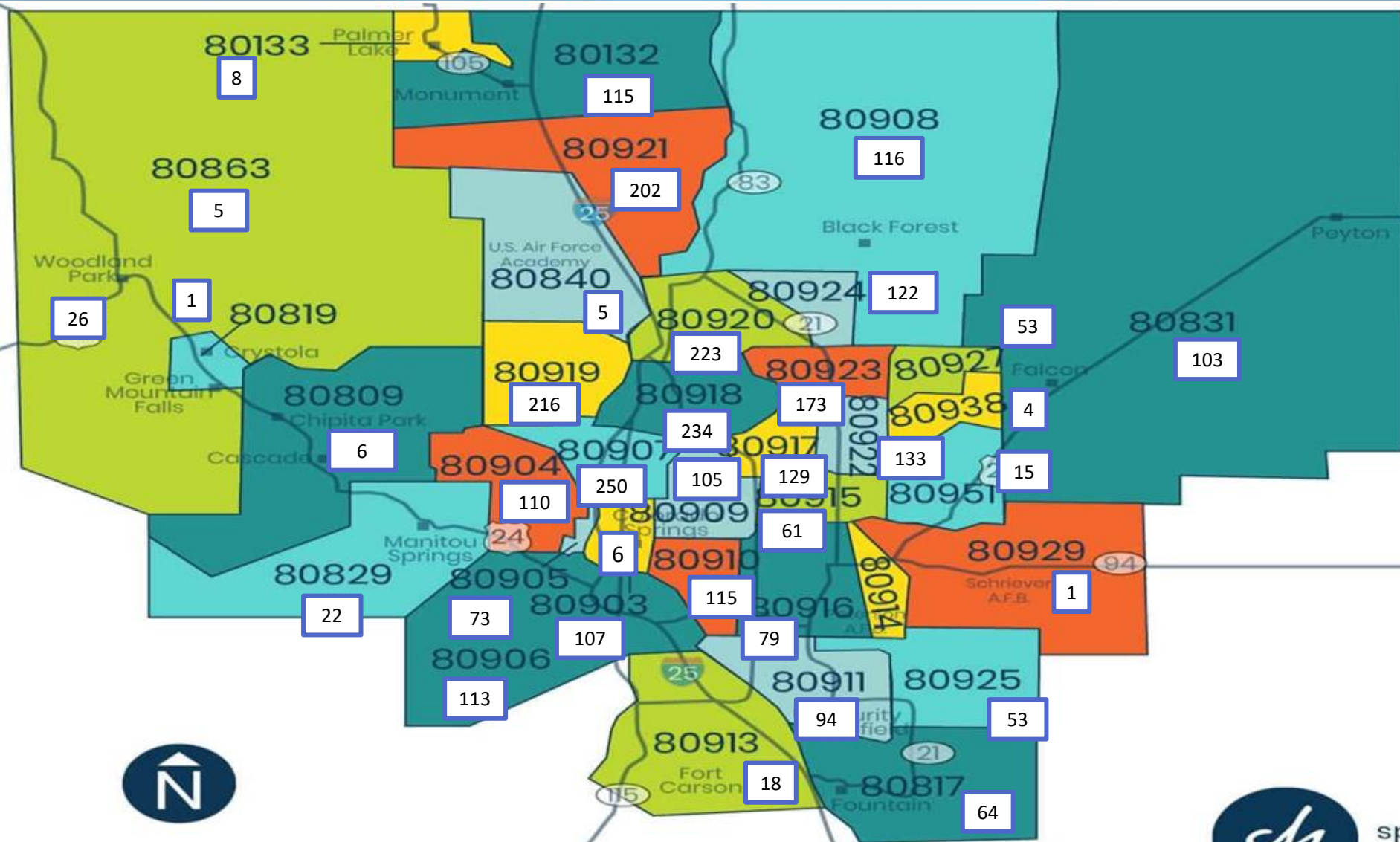
Expense \$2,847,748.00

Valley Hi

Revenue \$1,408,576.00

Expense \$1,406,783.00

El Paso County



State



Engaging the Community through Social Media



A screenshot of the Facebook page for Patty Jewett Golf Course. The header shows the course name and a verified checkmark. Below the header is a navigation bar with "Timeline", "About", "Photos", "Reviews", and "More". The main content area shows a post from "Patty Jewett Golf Course" published by "Tim Ausec" on February 16 at 2:20pm. The post text reads: "The snow will finally be gone on Wednesday, February 17th. We will have all 27 holes open with golf carts available tomorrow. Call us to reserve your tee time today!" The left sidebar shows engagement metrics: 586 likes (+3 this week), 10K were here (+35 this week), and 17 post reach this week.



A screenshot of the City of Colorado Springs website. The page features a navigation bar with "Home", "About", "Services", "Government", "Neighborhoods", and "Business". The main content area is titled "City Golf Courses" and lists three courses: Patty Jewett Golf Course, Valley Hi Golf Course, and Southridge Golf Course. Each course listing includes a "View Details" button and a small logo.

A screenshot of the Facebook page for Valley Hi Golf Course. The header shows the course name and a verified checkmark. Below the header is a navigation bar with "Timeline", "About", "Photos", "Reviews", and "More". The main content area shows a post from "Valley Hi Golf Course" published by "Tim Ausec" on February 16 at 2:29pm. The post text reads: "The snow will finally be gone on Wednesday, February 17th. We will have all 18 holes open with golf carts available tomorrow. Call us to reserve your tee time today!" The left sidebar shows engagement metrics: 0% response rate, 341 likes (+1 this week), and 2,813 were here (+11 this week).

Valley Hi Golf Course

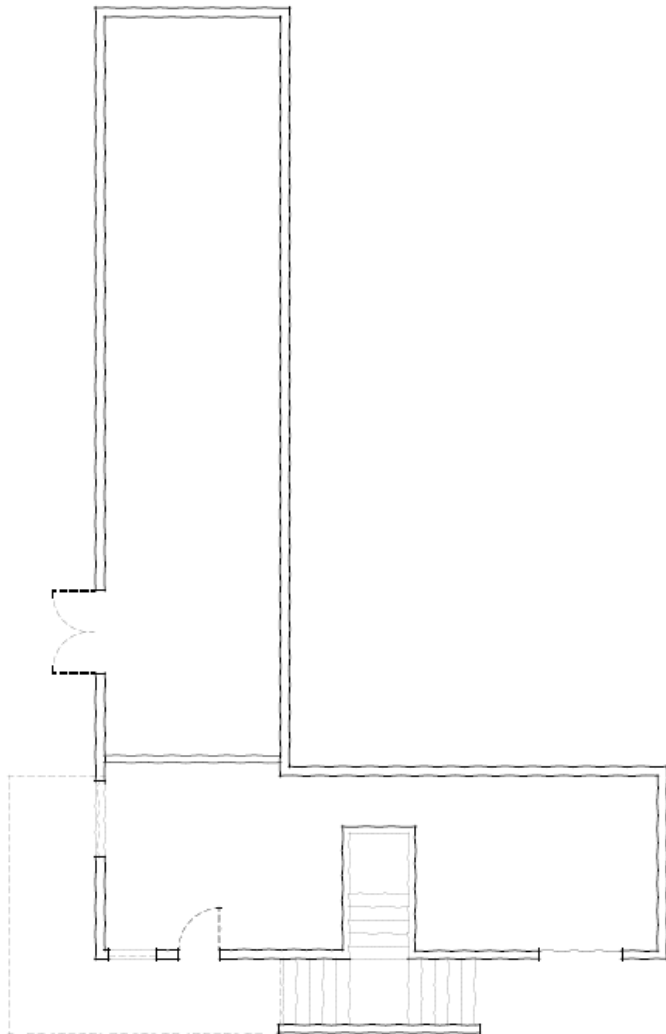


Brian Fox Class A
Superintendent

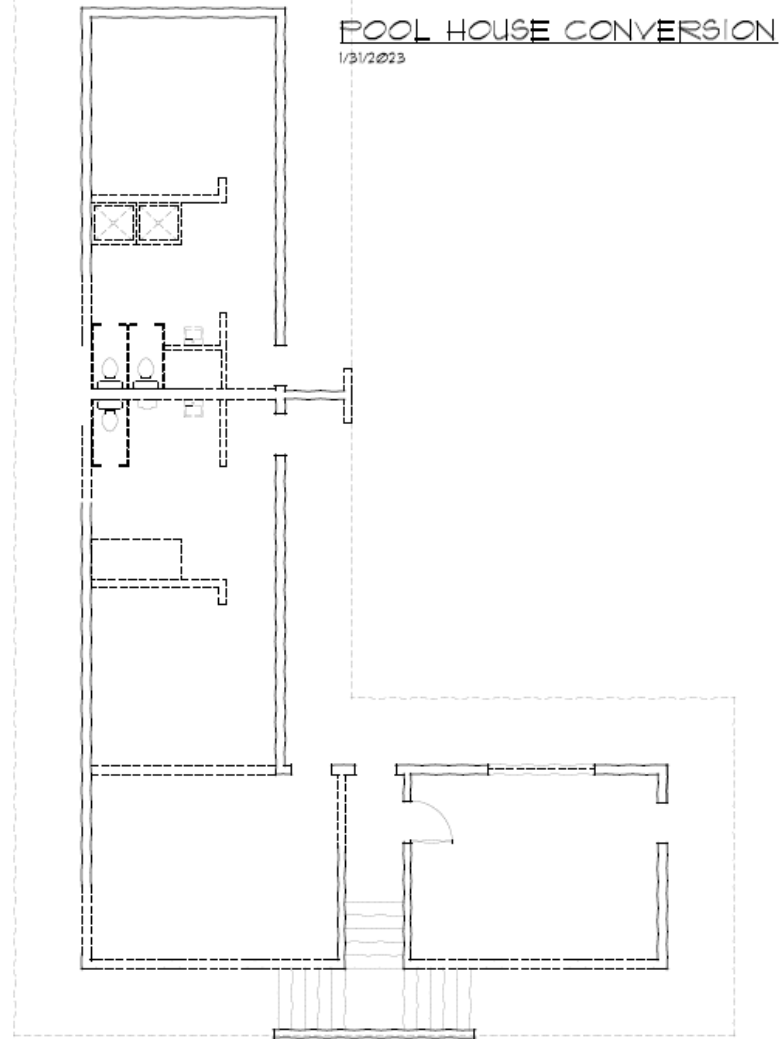
2022 Projects



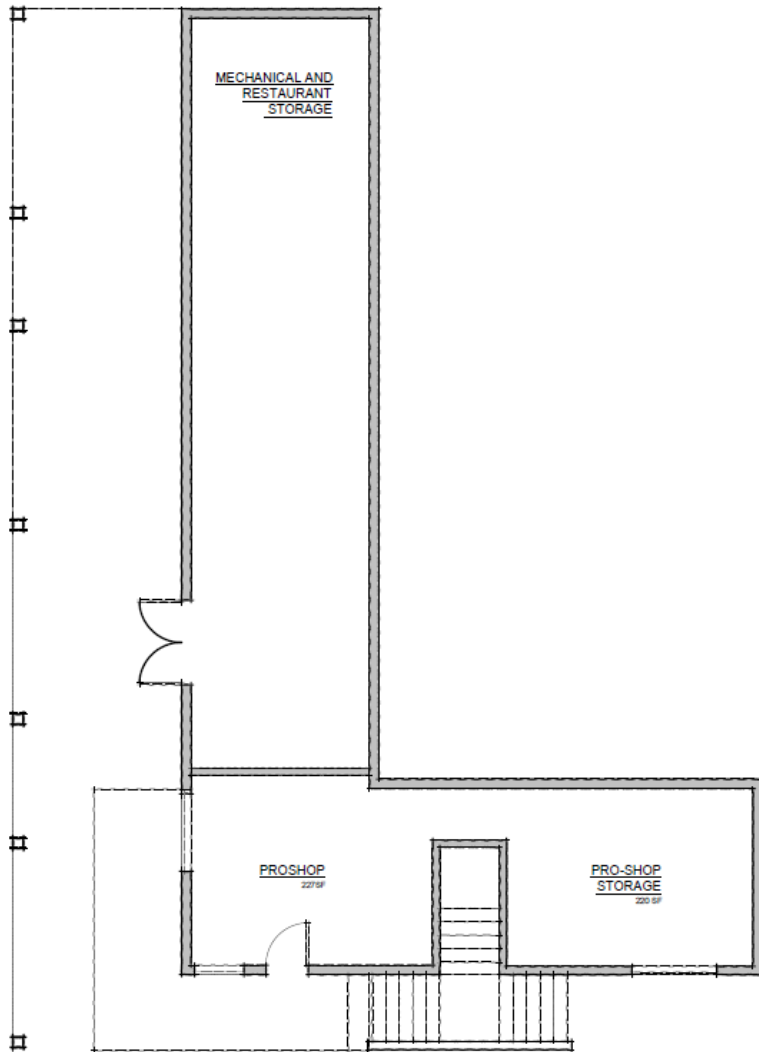
- Evaluation of Clubhouse Building
- Design Edge
 - Roof Repairs
 - Electrical Issues
 - Asbestos
 - Mechanical Systems
- New Building Options



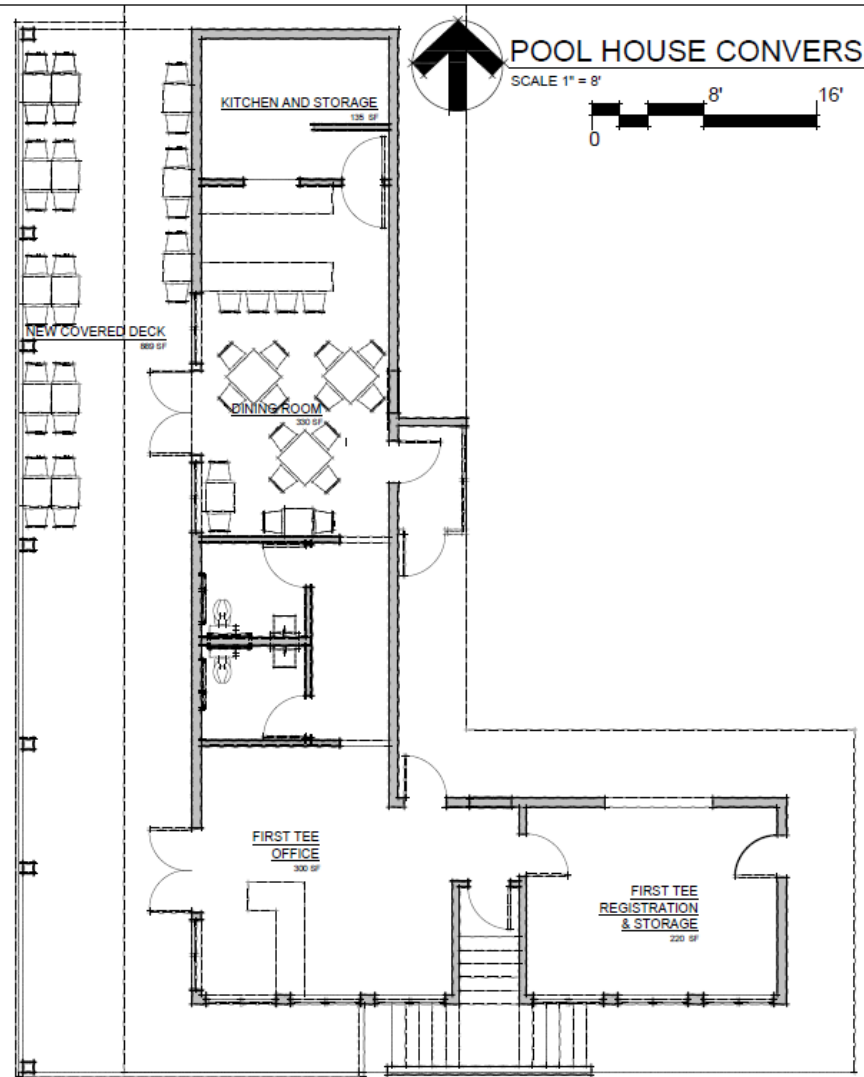
LOWER LEVEL DEMO PLAN



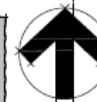
UPPER LEVEL DEMO PLAN



LOWER LEVEL PLAN



UPPER LEVEL PLAN



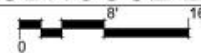
POOL HOUSE CONVERSION

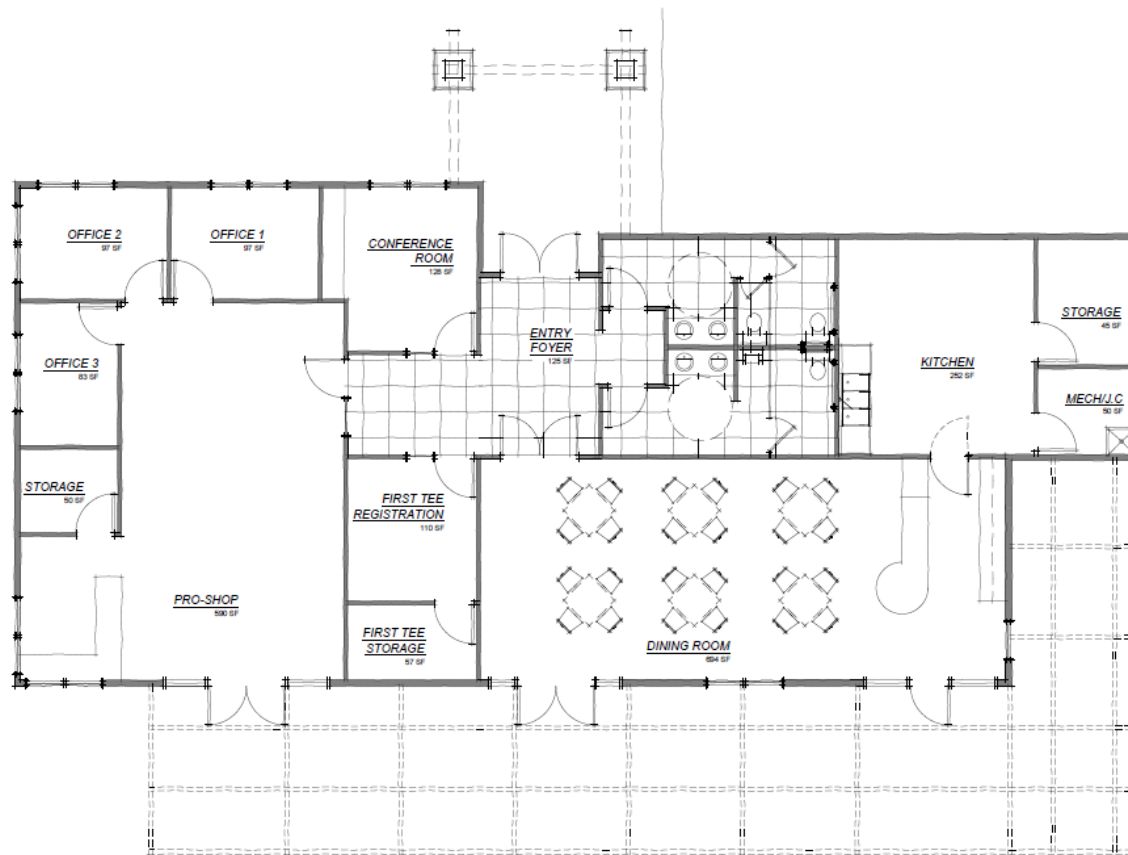
SCALE 1" = 8'
0 8' 16'



GOLF CLUBHOUSE ELEVATION

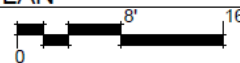
SCALE 1" = 8'





CLUBHOUSE PLAN

SCALE 1" = 8'
3,000 sf



2023 and Beyond



- Irrigation System ARPA Funding
 - Irrigation Design Layout is in Final Process
 - Turf Reduction
 - Bidding Process 2023
 - Installation 2024 – 2025
- Continuation Evaluation of Clubhouse Building







Patty Jewett Golf Course



Jeff Wichman Class A
Superintendent



2022 Recognition



PRESENTED BY
GOLFTEC

Avid Golfer

BEST SOUTHERN COURSE Resort and Public
(Colorado Springs and south)

Staff Pick



GOLF COURSE

 **PATTY JEWETT GOLF COURSE**

 **THE BROADMOOR**

 **EISENHOWER GOLF COURSE**

PRIME RIB

 **MACKENZIE'S CHOP HOUSE**

 **PATTY JEWETT BAR AND GRILL**

 **TEXAS ROADHOUSE**



Colorado Springs Business Journal
BEST IN BUSINESS 2022:

TOURISM, TRAVEL & HOSPITALITY

Golf Course

Gold: Patty Jewett Golf Course

2022 Projects



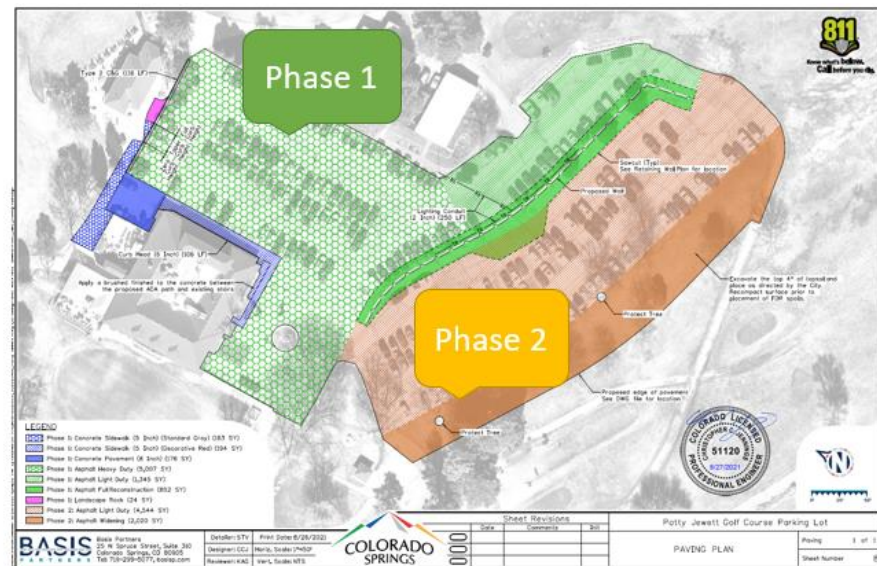
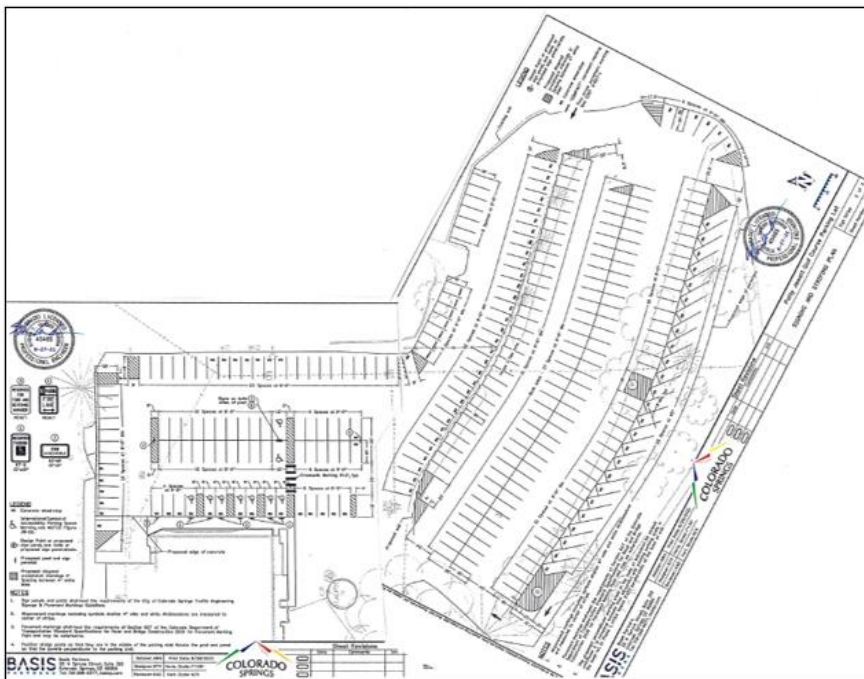
- Parking Lot Reconstruction / Addition and Pavement
 - Additional 57 Spaces Created
 - 297 Parking Spaces (239)
 - 9 ADA Parking Spaces (10)

Patty Jewett Parking Lot Reconstruction and Pavement

Project Start Date: April 4, 2022

Proposed Project End Date: May 20, 2022

Golf Course & Restaurant Closure April 18–22, 2022



The current parking lot life has come to an end. The lot must be replaced before it loses its structural stability. In addition to replacing the surface, approximately 65 new parking spots will be created as part of this project.

This project will be accomplished in two phases.

Phase 1 April 4 – 22, 2022

Phase 2 April 25 – May 20, 2022

The course and the clubhouse will remain open during the project with limited parking. (Exception: Everything will be closed the week of April 18-22, 2022.) Please plan accordingly.





PATTY JEWETT MEMORIAL FIELD







Tie in 18 Cart Path



2023 and Beyond

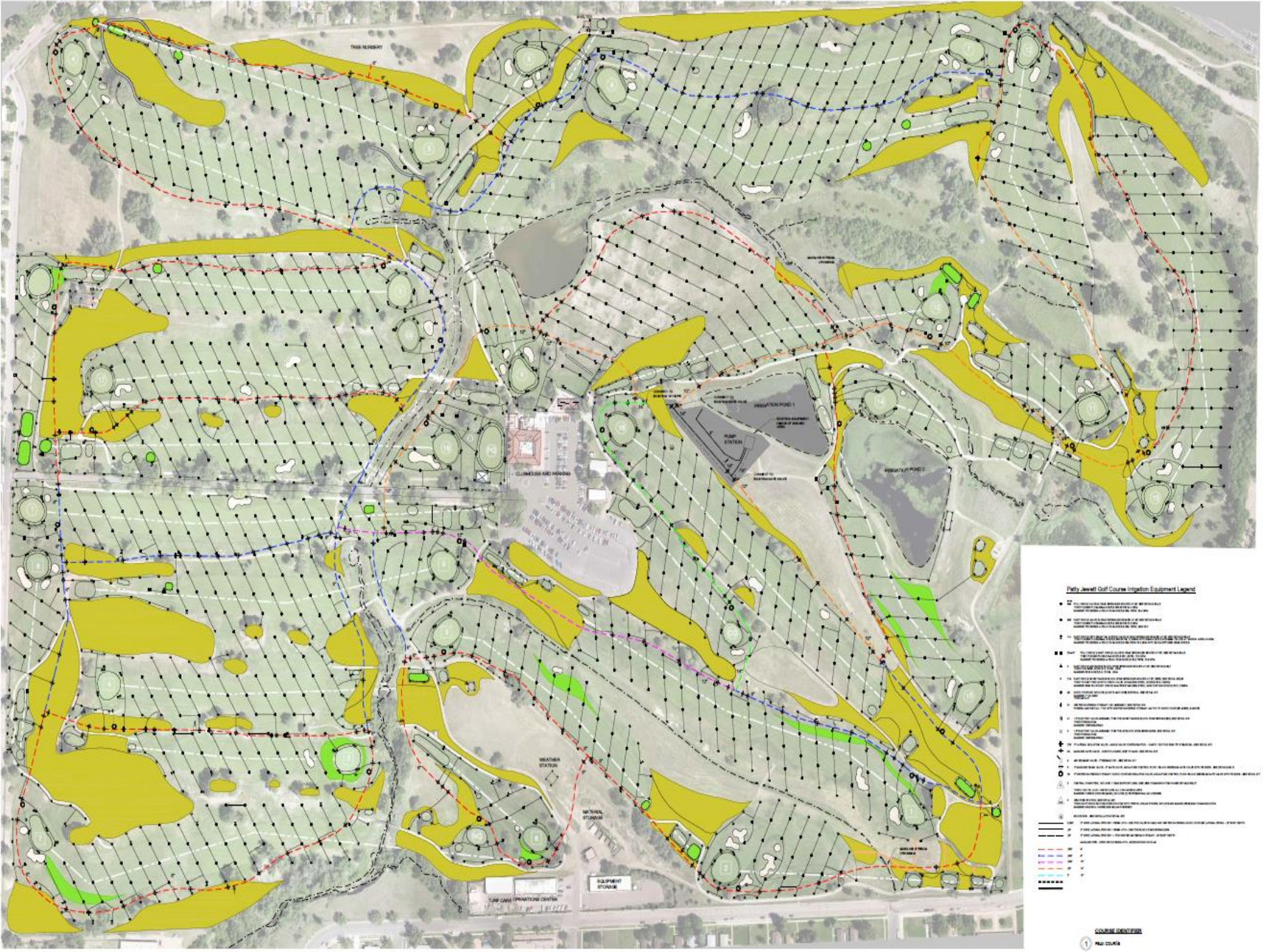


- Irrigation System ARPA Funding
 - Irrigation Design is in the Final Process
 - Turf Reduction
 - Bidding Process 2023
 - Installation 2024 – 2025
- Clubhouse Center Roof Replacement



Irrigation Technologies
 10300 N. Claver Ave.
 Littleton, CO 80120
 Phone 720.232.4228
 www.igtechnologies.com

**Patty Jewett Golf Course
 Irrigation System Replacement Plan Set
 Colorado Springs, CO**



Patty Jewett Golf Course Irrigation Equipment Legend

- 1. 1/2" 100' GAL. WATER TIGHT POLYETHYLENE PIPE
- 2. 1/2" 100' GAL. WATER TIGHT POLYETHYLENE PIPE WITH 1/2" DRIP EMITTERS
- 3. 1/2" 100' GAL. WATER TIGHT POLYETHYLENE PIPE WITH 1/2" DRIP EMITTERS AND 1/2" DRIP EMITTERS
- 4. 1/2" 100' GAL. WATER TIGHT POLYETHYLENE PIPE WITH 1/2" DRIP EMITTERS AND 1/2" DRIP EMITTERS
- 5. 1/2" 100' GAL. WATER TIGHT POLYETHYLENE PIPE WITH 1/2" DRIP EMITTERS AND 1/2" DRIP EMITTERS
- 6. 1/2" 100' GAL. WATER TIGHT POLYETHYLENE PIPE WITH 1/2" DRIP EMITTERS AND 1/2" DRIP EMITTERS
- 7. 1/2" 100' GAL. WATER TIGHT POLYETHYLENE PIPE WITH 1/2" DRIP EMITTERS AND 1/2" DRIP EMITTERS
- 8. 1/2" 100' GAL. WATER TIGHT POLYETHYLENE PIPE WITH 1/2" DRIP EMITTERS AND 1/2" DRIP EMITTERS
- 9. 1/2" 100' GAL. WATER TIGHT POLYETHYLENE PIPE WITH 1/2" DRIP EMITTERS AND 1/2" DRIP EMITTERS
- 10. 1/2" 100' GAL. WATER TIGHT POLYETHYLENE PIPE WITH 1/2" DRIP EMITTERS AND 1/2" DRIP EMITTERS
- 11. 1/2" 100' GAL. WATER TIGHT POLYETHYLENE PIPE WITH 1/2" DRIP EMITTERS AND 1/2" DRIP EMITTERS
- 12. 1/2" 100' GAL. WATER TIGHT POLYETHYLENE PIPE WITH 1/2" DRIP EMITTERS AND 1/2" DRIP EMITTERS
- 13. 1/2" 100' GAL. WATER TIGHT POLYETHYLENE PIPE WITH 1/2" DRIP EMITTERS AND 1/2" DRIP EMITTERS
- 14. 1/2" 100' GAL. WATER TIGHT POLYETHYLENE PIPE WITH 1/2" DRIP EMITTERS AND 1/2" DRIP EMITTERS
- 15. 1/2" 100' GAL. WATER TIGHT POLYETHYLENE PIPE WITH 1/2" DRIP EMITTERS AND 1/2" DRIP EMITTERS
- 16. 1/2" 100' GAL. WATER TIGHT POLYETHYLENE PIPE WITH 1/2" DRIP EMITTERS AND 1/2" DRIP EMITTERS
- 17. 1/2" 100' GAL. WATER TIGHT POLYETHYLENE PIPE WITH 1/2" DRIP EMITTERS AND 1/2" DRIP EMITTERS
- 18. 1/2" 100' GAL. WATER TIGHT POLYETHYLENE PIPE WITH 1/2" DRIP EMITTERS AND 1/2" DRIP EMITTERS
- 19. 1/2" 100' GAL. WATER TIGHT POLYETHYLENE PIPE WITH 1/2" DRIP EMITTERS AND 1/2" DRIP EMITTERS
- 20. 1/2" 100' GAL. WATER TIGHT POLYETHYLENE PIPE WITH 1/2" DRIP EMITTERS AND 1/2" DRIP EMITTERS
- 21. 1/2" 100' GAL. WATER TIGHT POLYETHYLENE PIPE WITH 1/2" DRIP EMITTERS AND 1/2" DRIP EMITTERS
- 22. 1/2" 100' GAL. WATER TIGHT POLYETHYLENE PIPE WITH 1/2" DRIP EMITTERS AND 1/2" DRIP EMITTERS

COURSE IDENTIFICATION

- FAIR COURSE
- PAR 3 COURSE

Project: P1 11-22
 Designer: BDK
 Checker: BDK
 Plot Date: 01-26-2023

REVISIONS

SHEET TITLE:
**Mechanical
 Drawing**

SHEET
Ir-4
 OF
X



