

A Preview of 2022 for The Trails, Open Space and Parks Program

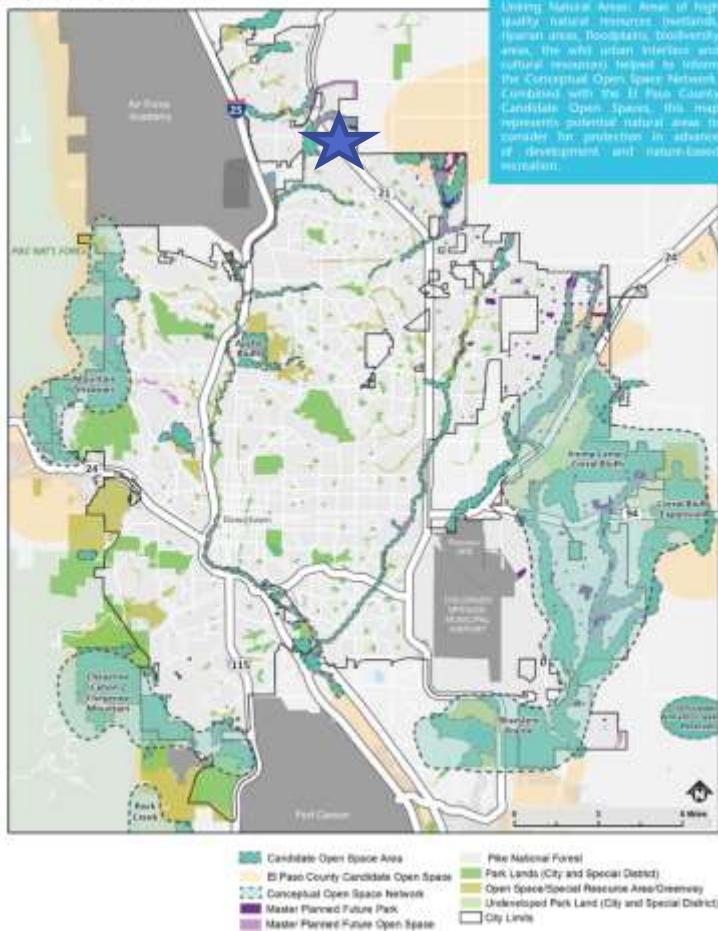
Britt Haley- TOPS Program Manager
January 5, 2022



Kettle Creek Greenway



Map 27: Open Space Candidate Areas



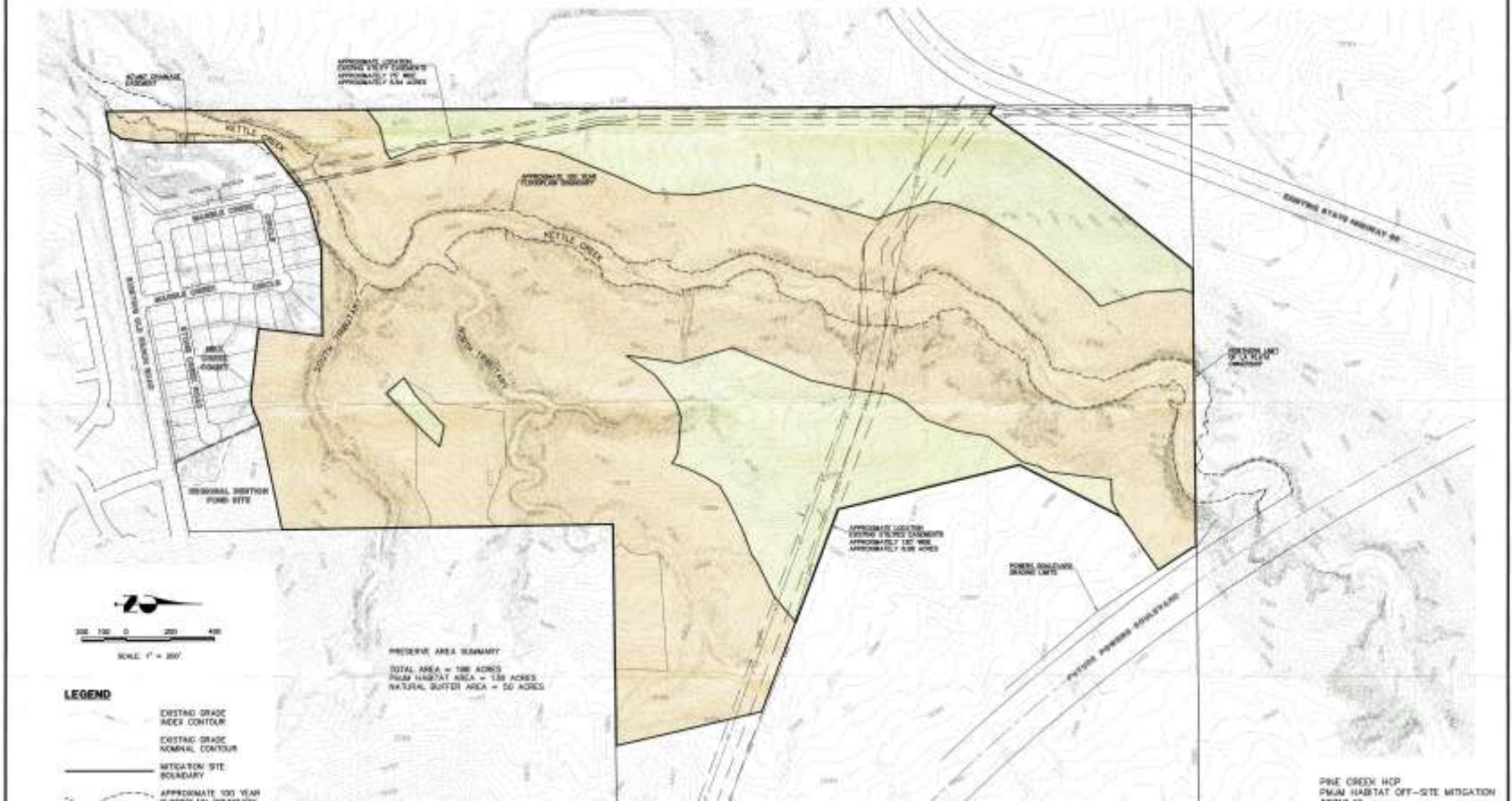
- Kettle Creek 154 acres (approx)
- West Kettle Creek
- TOPS Committee toured on April 17, 2019
- Purchase in 2 Phases
- Family Donation \$500,000
- On hold pending development plan to the south



Potential Donation of Neighboring Property



PINE CREEK HCP PMJM HABITAT OFF-SITE MITIGATION MAP KETTLE CREEK PRESERVE JUNE 2002



Black Canyon Quarry Reclamation



Next steps:

**2023 budget
request to
perform
required
reclamation**



Next Steps



- **Address trespass uses**
- **Reclamation on the property**
- **Coordination with reclamation west of the property at the Pikeview Quarry**

Progress on Trails



- Legacy Loop
- Sand Creek Trail
- Rock Island Trail
- Chamberlain Trail
- La Foret Trail

Corral Bluffs Area

- Demolition of structures
- Question regarding joint planning for Jimmy Camp Creek Regional Park and Corral Bluffs
- Identify key acquisition areas



Fisher Canyon Open Space

- Complete acquisition from The Conservation Fund
- Begin Chamberlain trail alignment review
- Coordination with neighboring properties



TOPS Ballot Question



- Continue to evaluate extension/increase/modifications
- What about orphaned properties such as Ute Valley Park and Jimmy Camp Creek?
- Evaluate timing



Just to name a few...

